

INSTALLATION

ENGLISH

WARNINGS AND CAUTIONS:

- CHOKING HAZARD -- Small parts. Not for children under 3 years.

Single Rocker Switch – Use Parts 'A' and 'B'

- Locate the light switch to lock.
- Toggle the light switch to ON or OFF as needed.
- Locate the gaps around the rocker plate (refer to Figure 1a).

1. Take one Toggle Shield® Rocker **part 'A'** from the bag. It is marked with the letter 'A' (see figure 2).
2. Hold the part as shown in figure 3, with the Toggle Shield® logo under your thumb.
3. Hold the light switch according to figure 4. This step is necessary to prevent the switch from moving during the installation of the lock.
4. Insert part 'A' as shown in figure 5 and 5a. Push until you hear a click.
5. The final installed position should look like figure 6.

- * Most single rocker switches can be locked using part 'A'. If the light switch continues to disconnect or connect the power when pushed, or if child proofing the light switch is required, then adding a part 'B' lock will fully secure the light switch.

To install part 'B' on a single rocker switch, please follow these steps:

- Part 'B' gets installed on the vertical opening visible in figure 1a.

1. Take one Toggle Shield® Rocker **part 'B'** from the bag. It is marked with the letter 'B' (see figure 7).
2. Hold the part as shown in figure 8.
3. Hold the light switch in place as shown in figure 9.
4. Insert part 'B' as shown in figure 10 and 11. Push until you hear one or two clicks.
5. The final installed position should look like figure 12.

Please scan this QR code to watch the installation instruction video.

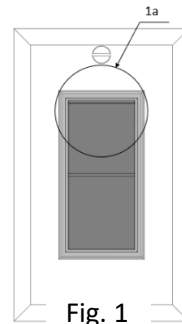


Fig. 1

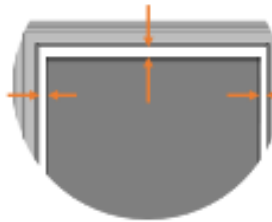


Fig. 1a

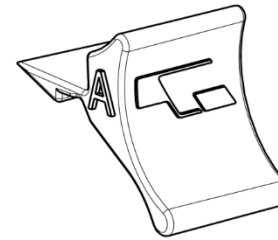


Fig. 2

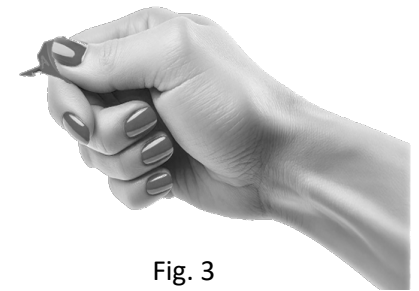


Fig. 3



Fig. 4

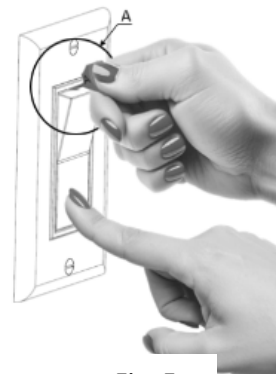


Fig. 5

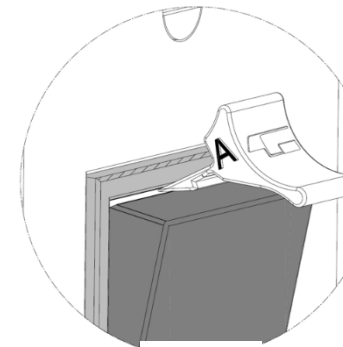


Fig. 5a



Fig. 6

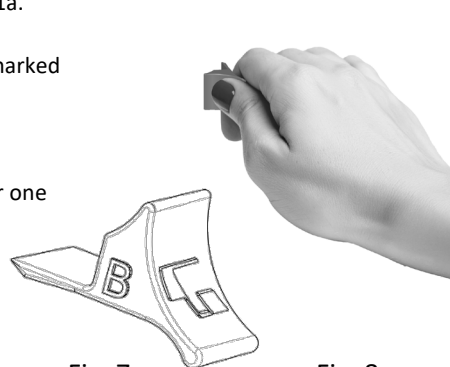


Fig. 7

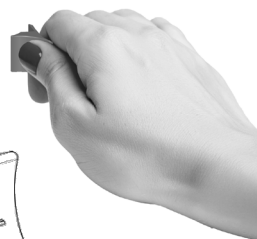


Fig. 8

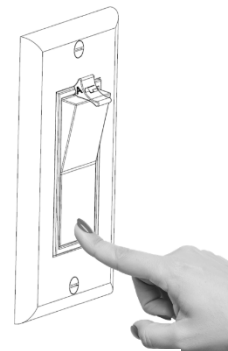


Fig. 9



Fig. 10

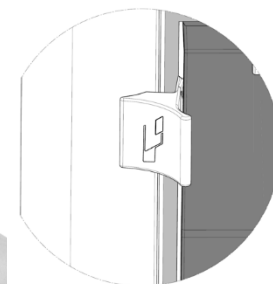


Fig. 11

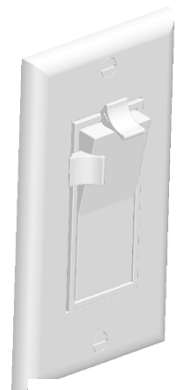


Fig. 12

TOGGLE SHIELD® ROCKER SWITCH



Double/Triple Rocker Switch – Use Part 'B'

- Locate the light switch to lock.
 - Toggle the light switch to ON or OFF as needed.
 - Locate the gaps around the rocker plate (refer to Figure 14a).
1. Take one Toggle Shield® Rocker **part 'B'** from the bag. It is marked with the letter 'B' (see figure 13).
 2. Hold the light switch according to figure 15. This step is necessary to prevent the switch from moving during the installation of the lock.
 3. Insert part 'B' as shown in figure 16 and 16a. Push until you hear one or two clicks.
 4. The final installed position should look like figure 17.

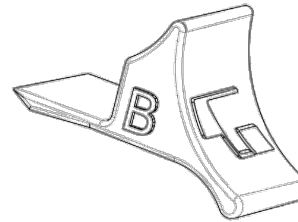


Fig. 13

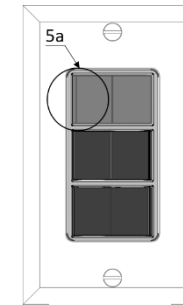


Fig. 14

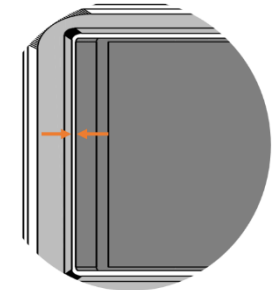


Fig. 14a

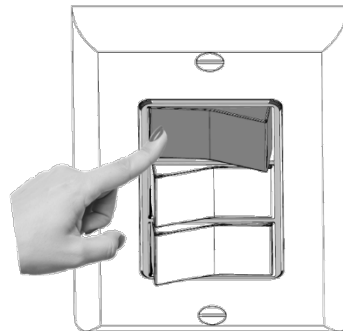


Fig. 15

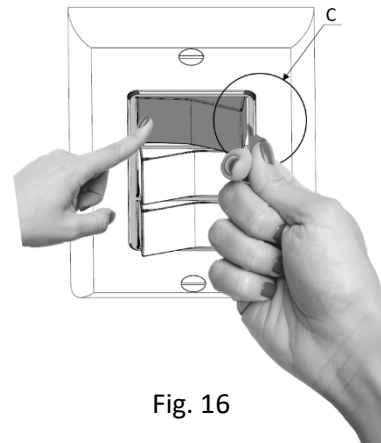


Fig. 16

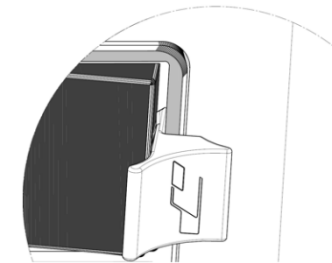


Fig. 16a

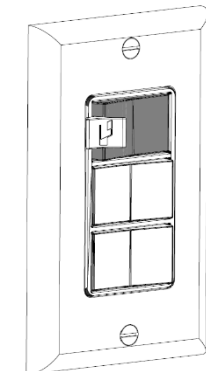


Fig. 17

TO REMOVE

1. To remove **part 'A'**, elevate the tail until the part disengages (figure 18).
2. To remove **part 'B'**, Twist it while pushing the tail up or down (figure 19).

Please scan this QR code to watch the installation instruction video.



Fig. 18 – Removal of part 'A'

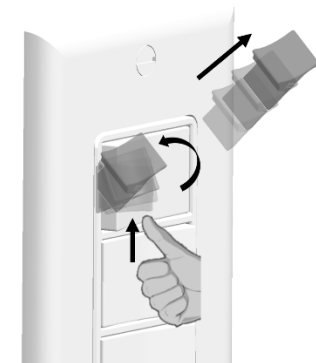


Fig. 19 – Removal of part 'B'